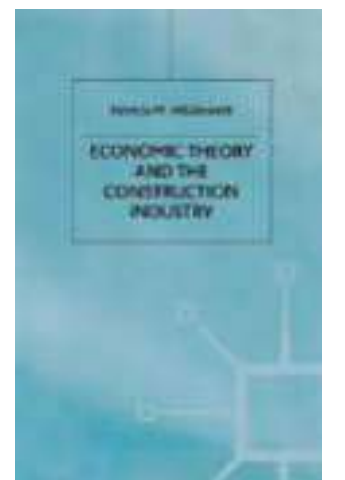
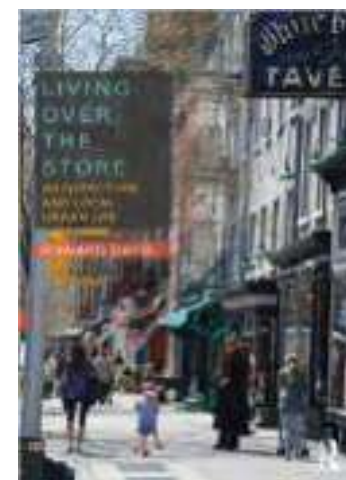
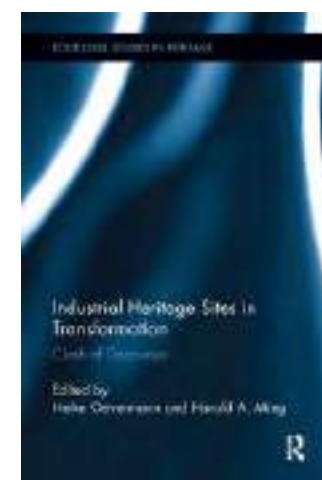
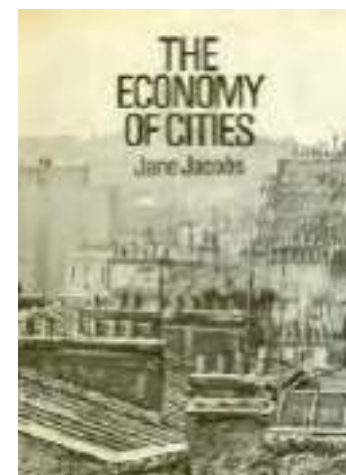
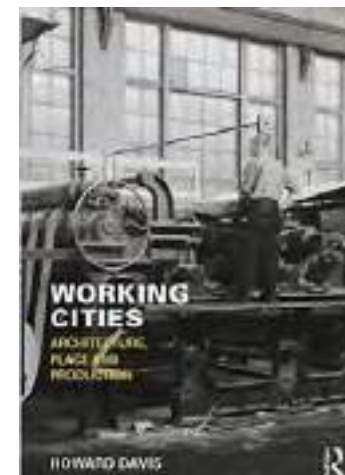
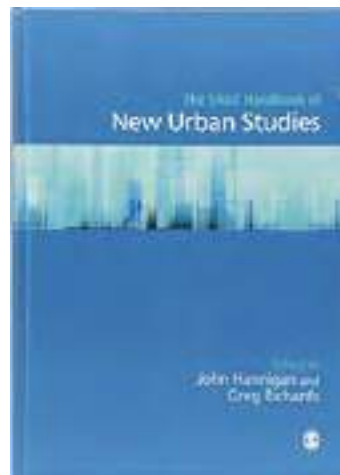




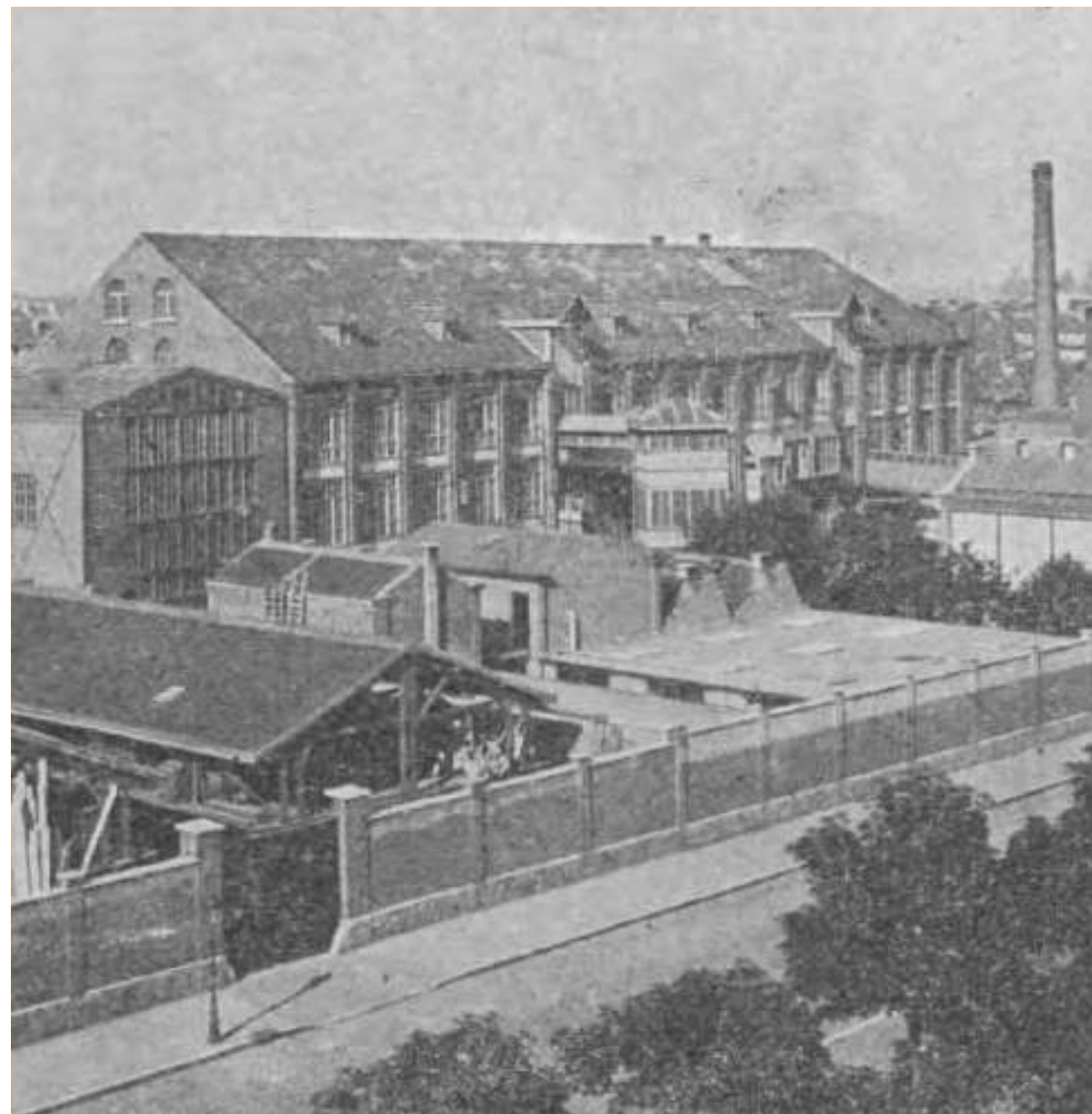
and - or / neither - nor



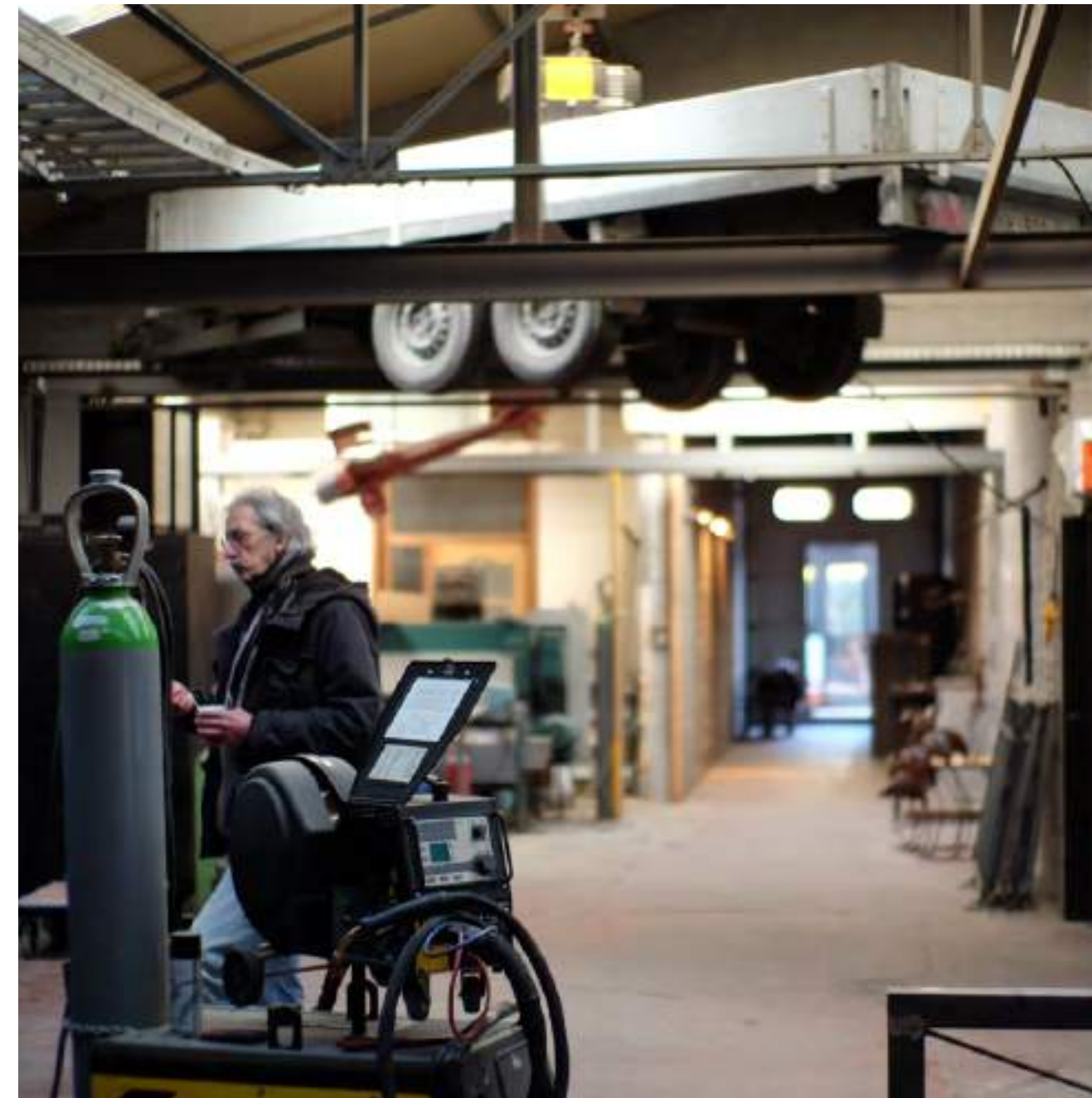
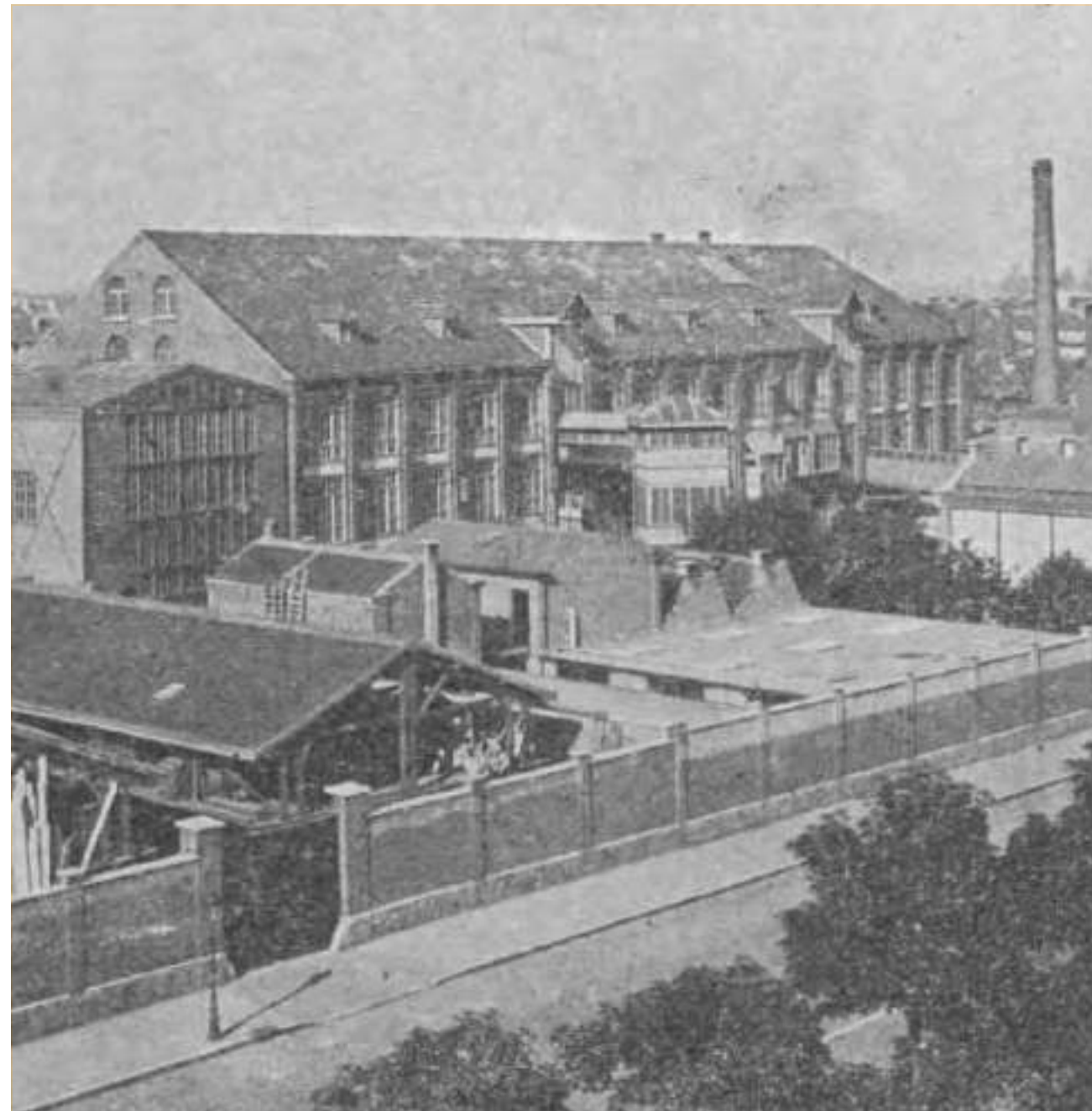




a threefold critique



a threefold critique



a threefold critique

How can we align the **preservation and retrofit** of indispensable city builders in the Brussels-Capital Region, with lessons from their **historical and everyday production of space**?

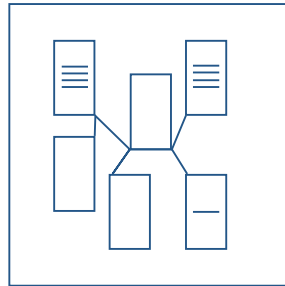
Database



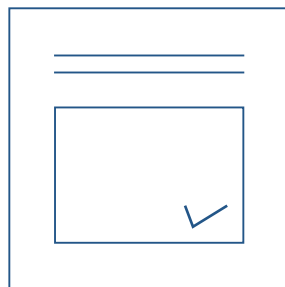
Knowledge building



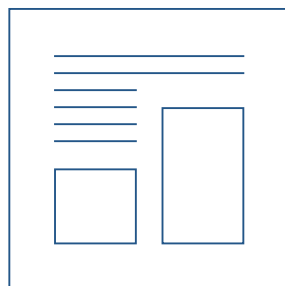
Reflections



Active enterprises
*Crossroad databank of enterprises
2016*



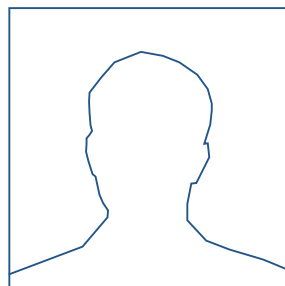
Environmental permits
*Granted permits for the execution
of potentially harmful activities
2018*



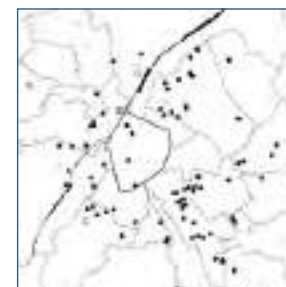
Inventory of industrial heritage
*Inventaire Visuel de l'Architecture
Industrielle à Bruxelles
1980s*



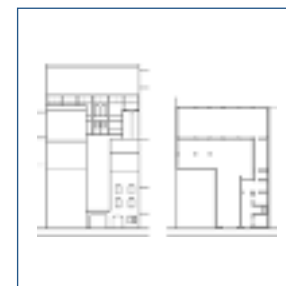
Industry and trade almanacks
*Time sections of builders
1894-1965*



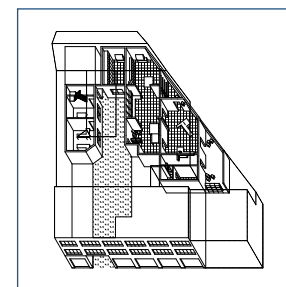
Semi-structured interviews
*With second and third generation
builders
2018-2019*



A geography of building
Thematic mapping analyses



Building the anatomy of the city
*Typo-morphological analyses
Montenegro, Jette, Maelbeek*



Productive use patterns
*Use in/and space
Timber, Metal, General building*



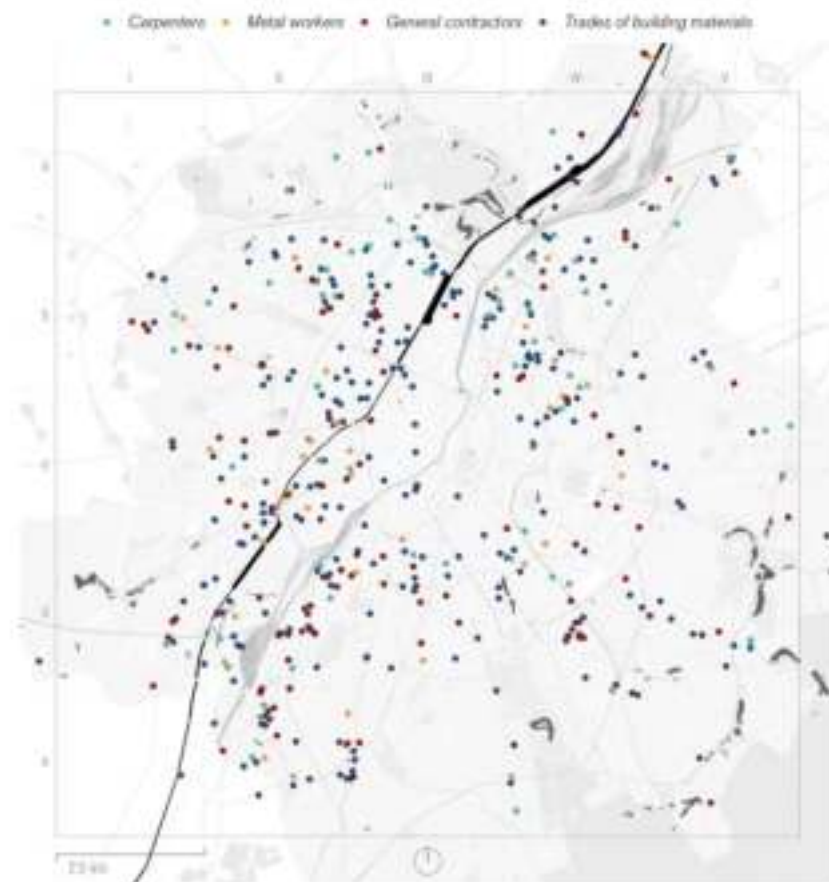
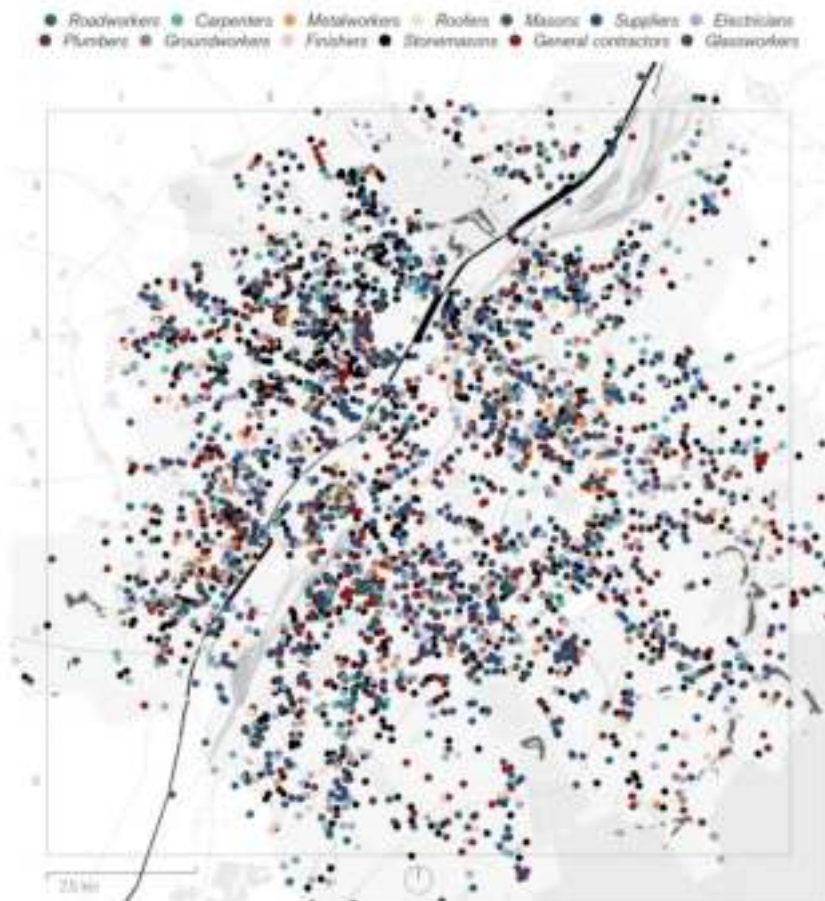
Building Brussels Baukultur
Industrial heritage



Build to construct
Lessons from within

Geography of building

understanding push and pull factors through mapping analyses



leading to 320 actual workspaces in construction





IMPORT
Vilvorde

Canal to Sea
Former railway
trajectory
Daily road
between import
and trade



Timber import Parmentier
Vilvorde, 1950s



TRADE
Schaerbeek

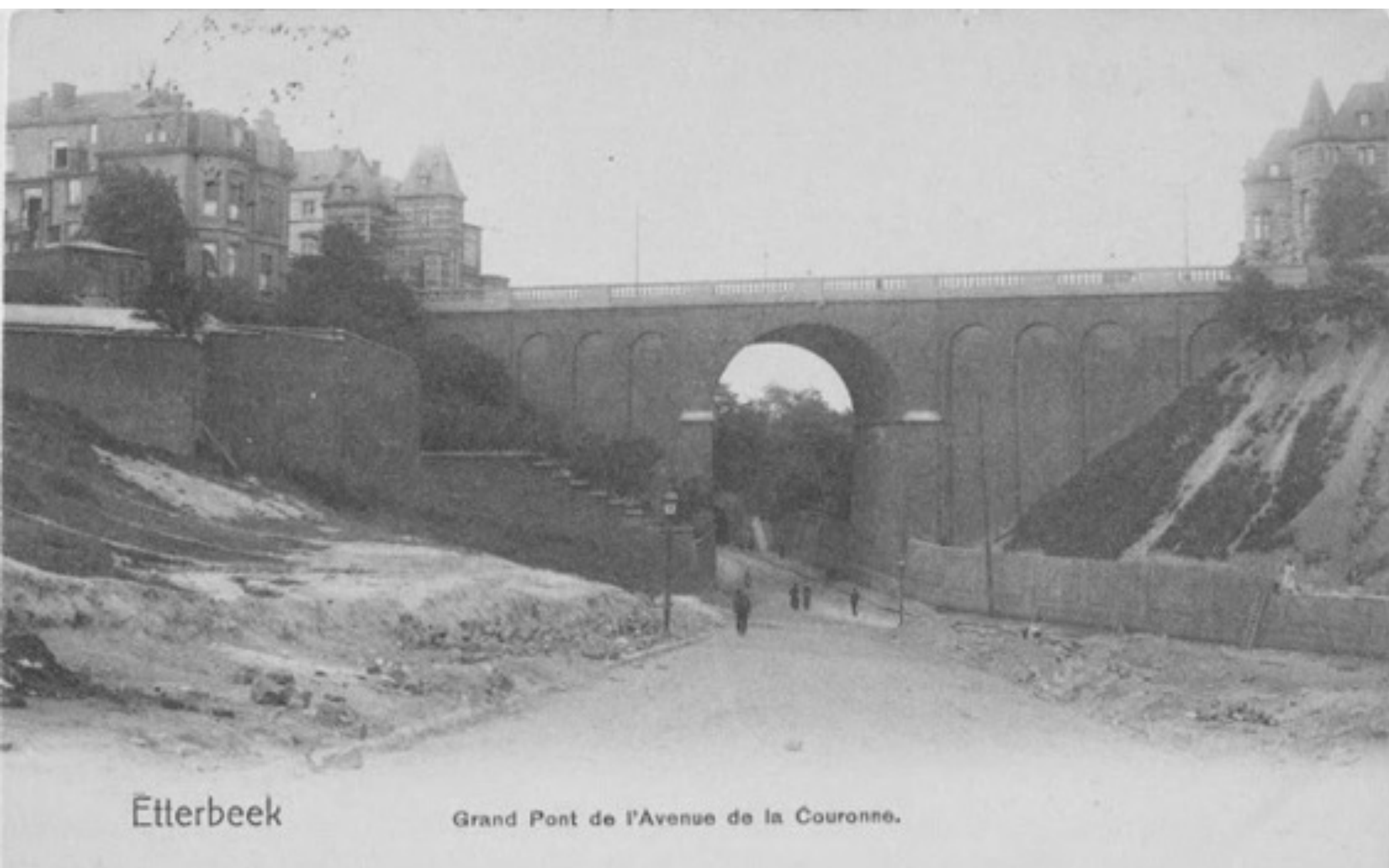


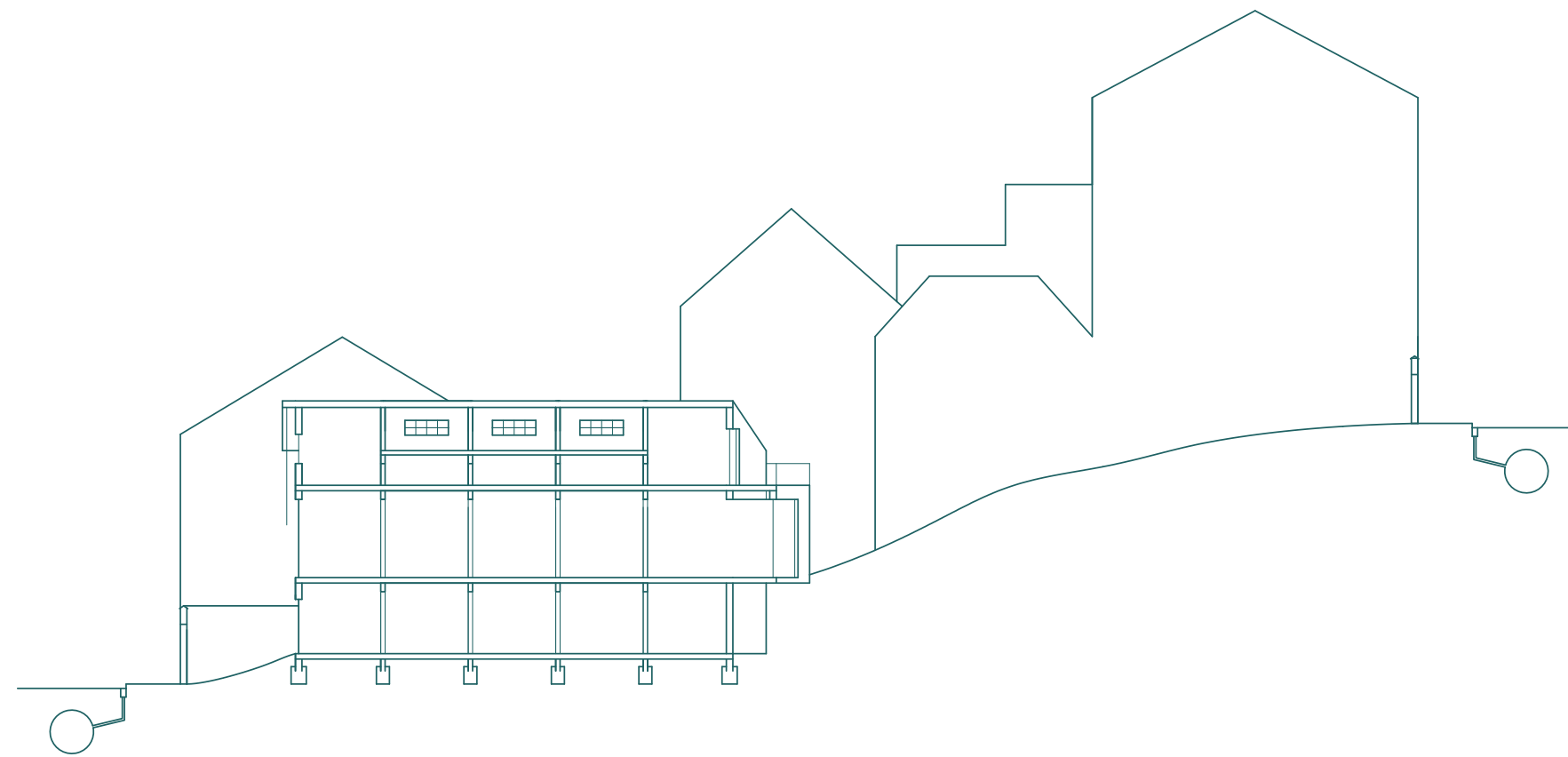
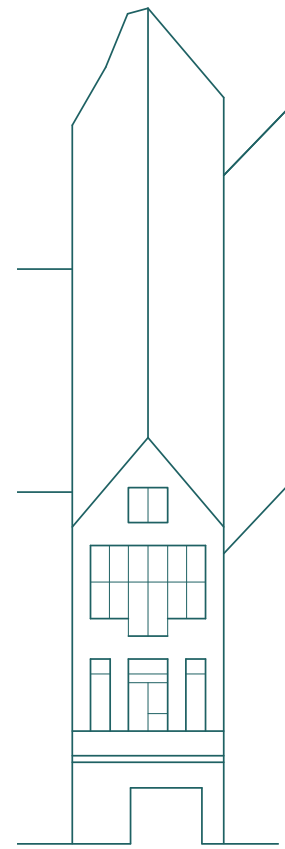
Maison François Lochten 1900s



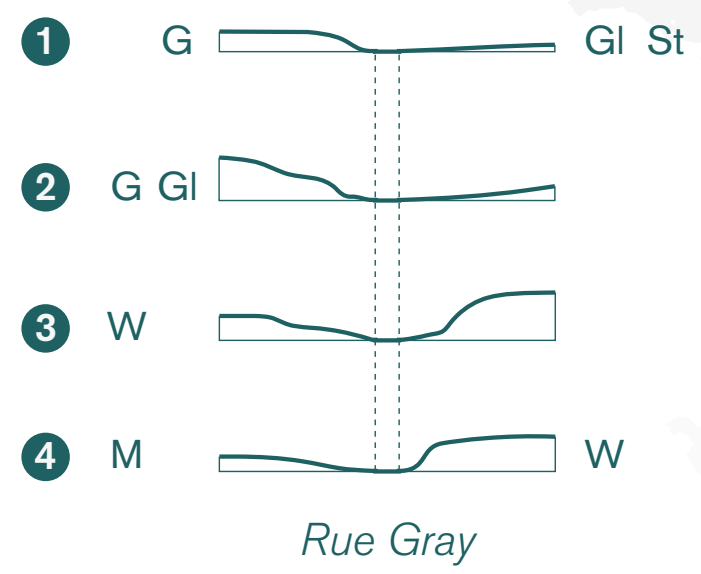
Historical structures

understanding historical breeding grounds for local anchoring





Jourdan



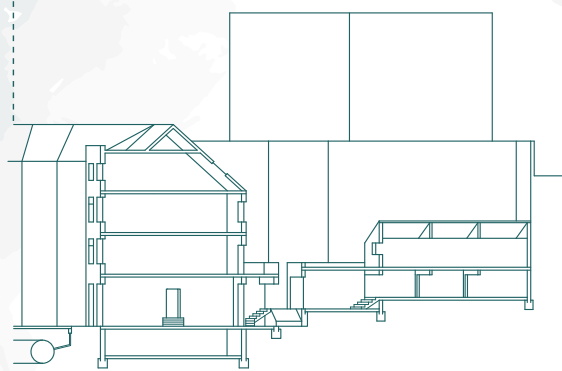
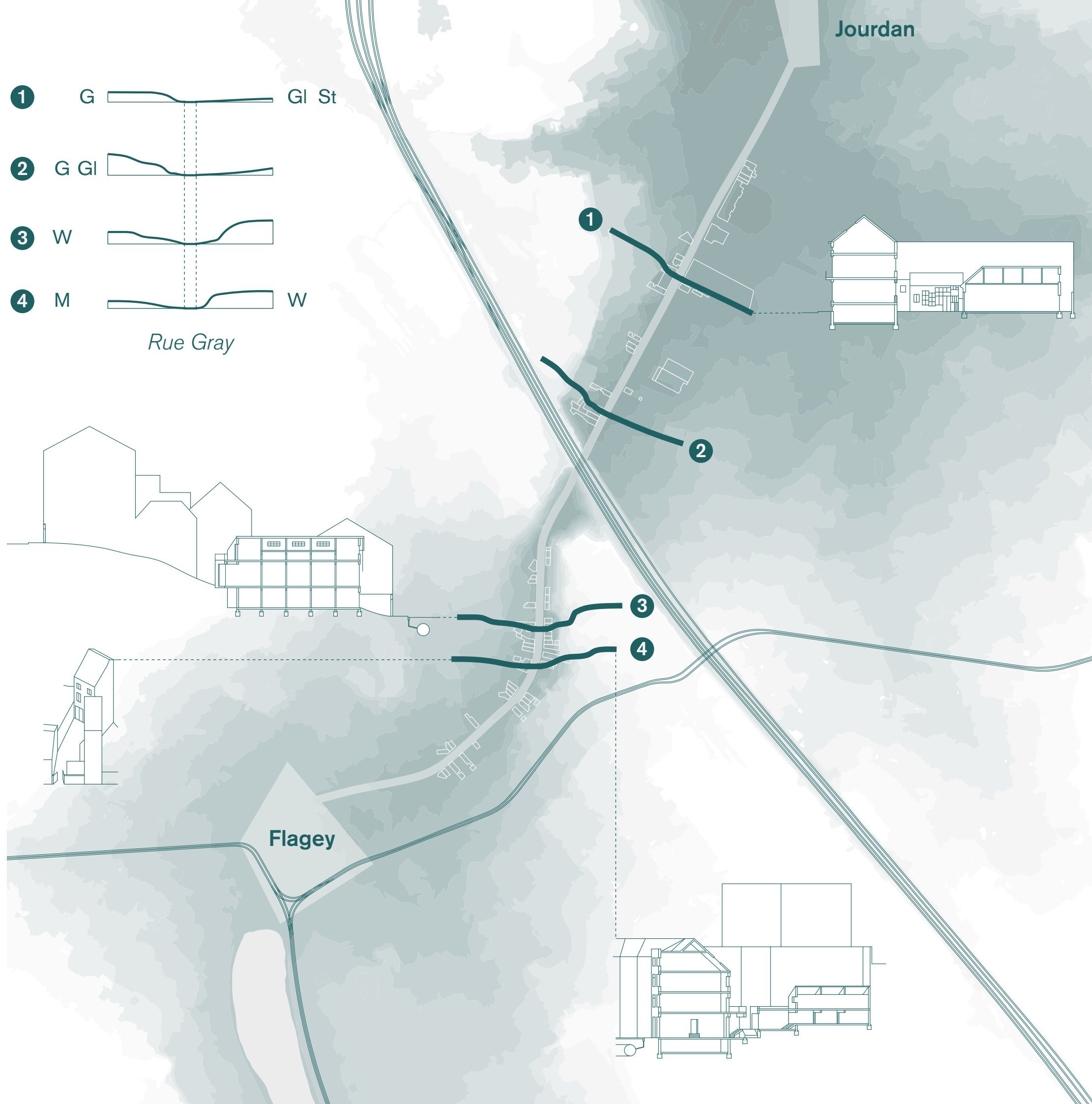
1

2

3

4

Flagey





Productive patterns

spatialising production processes