

Welcome at the hybrid symposium

# **Re/Building Brussels (1695 – 2025)**

The urban construction sector and the need for production space,  
social inclusion and circularity (1695-today)

We will start at ±13h00

# Program symposium

13h00 Introduction

**Building Brussels** and the production of space

by researchers Matthijs Degraeve, Frederik Vandyck and Sarah De Boeck

Commentary by Kristiaan Borret (Brussels Bouwmeester/Maître Architecte)

14h00 **Rebuilding Brussels.** The urban construction sector as an engine  
for social inclusion and circularity

by researchers Karoline da Silva Rodrigues, Lara Reyniers and Louise Huba

Lecture by Judy Stephenson (The Bartlett School of Sustainable Construction)

Lecture by Gilli Hobbs (Sustainability and Circular economy Advisor)

Discussion

17h00 The end and walk to opening **Expo** Re/Building Brussels

**CHALLENGES FOR THE CITY**

10

11

12

13

14

15



16



17



18



19

20



21

22



23



EXPO Re/Building Brussels  
Sint Goriks Hallen/Halles St-Géry  
Until March 27, 2022



# Hageltoren / Tour à plomb







**Manufacture de Plombs de Chasse**  
*Balles, Balleter et Fils de Plomb*  
**Pelgrims et Bombeeck**  
 42, RUE DES FABRIQUES  
**BRUXELLES** TELEPHONE 1510  
 EXPORTATION CHILLED

12 • 1250 per OZ	11 • 1040 per OZ	10 • 850 per OZ	9 • 560 per OZ	8 • 450 per OZ	7 • 340 per OZ
6 • 270 per OZ	5 • 215 per OZ	4 • 172 per OZ	3 • 140 per OZ	2 • 122 per OZ	1 • 104 per OZ
0 • 98 per OZ	2/0 • 84 per OZ	3/0 • 66 per OZ	4/0 • 56 per OZ	5/0 • 48 per OZ	6/0 • 40 per OZ

**PALLETTES.**

1 • 25 cal. 16	2 • 20 cal. 12
3 • 12 cal. 10	4 • 12 cal. 10
5 • 12 cal. 10	6 • 12 cal. 10

Hunting shotgun pallets ([www.littlegun.be](http://www.littlegun.be))

Hageltoren in 1979 ([monument.heritage.brussels](http://monument.heritage.brussels))





Photos by © Georges de Kinder ([www.hageltoren.be](http://www.hageltoren.be))

# Program symposium

13h00 Introduction

**Building Brussels** and the production of space

by researchers Matthijs Degraeve, Frederik Vandyck and Sarah De Boeck

Commentary by Kristiaan Borret (Brussels Bouwmeester/Maître Architecte)

14h00 **Rebuilding Brussels.** The urban construction sector as an engine for social inclusion and circularity

by researchers Karoline da Silva Rodrigues, Lara Reyniers and Louise Huba

Lecture by Judy Stephenson (The Bartlett School of Sustainable Construction)

Lecture by Gilli Hobbs (Sustainability and Circular economy Advisor)

Discussion

17h00 The end and walk to opening **Expo** Re/Building Brussels

# VUB Interdisciplinary research project 2016-2021

## Building Brussels

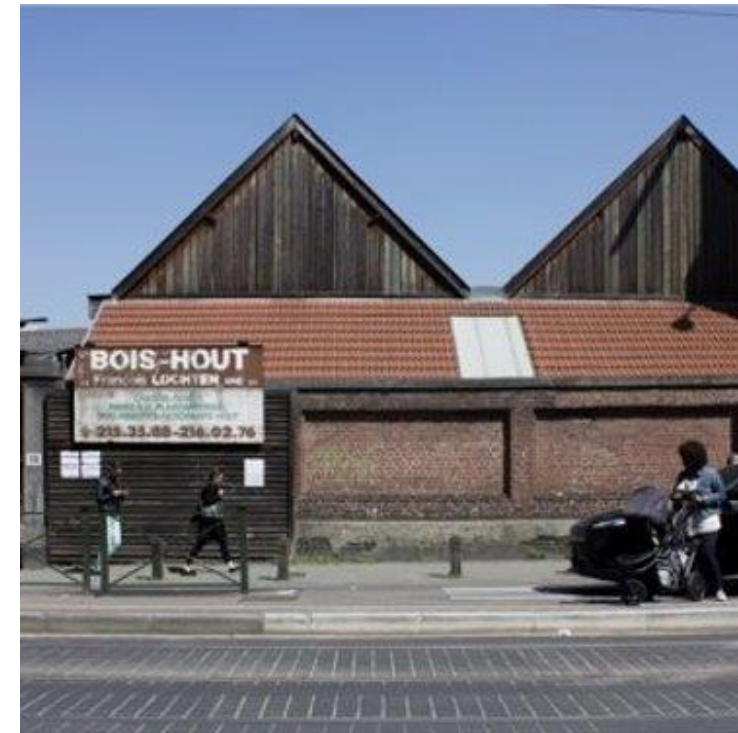
### Brussels city builders and the production of space, 1794-2015



Why?

Companies in the construction sector are driven out of the city  
Exodus has negative impact on urban economy and the cityscape

Towards a productive city?





# VUB Interdisciplinary research project 2016-2021

## Building Brussels

### Brussels city builders and the production of space, 1794-2015



What?

- Where did carpenters, bricklayers, .. settle over past 200 years?
- How did location strategy of construction companies change?
- Built infrastructure and remaining buildings
- Today's spatial needs of the construction sector
- Formulate policy recommendations to strengthen living and working in the city

# VUB Interdisciplinary research project 2016-2021



## Building Brussels

### Brussels city builders and the production of space, 1794-2015

#### VUB

- **Architecture and heritage**\_ARCH Department of Architectural Engineering  
Inge Bertels, Stephanie Van de Voorde, Ann Verdonck, Ine Wouters
- **Economic and urban history**\_HOST Historical Research into Urban Transformation Processes  
Heidi Deneweth
- **Spatial planning**\_COSMOPOLIS Centre for Urban Research  
Michael Ryckewaert, Bas Van Heur, David Bassens

#### Collaborators

- CReA Philippe Sosnowska, HIST Peter Scholliers



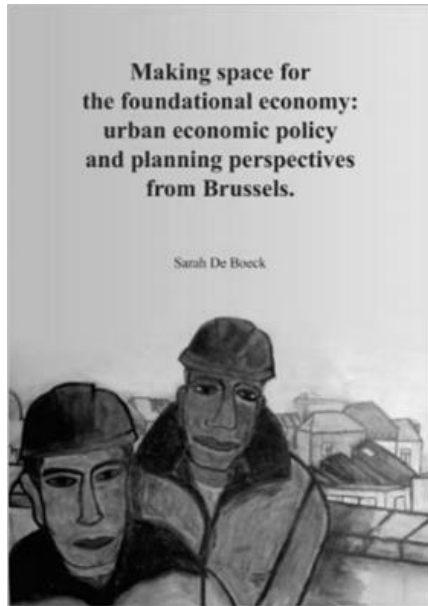
# VUB Interdisciplinary research project 2016-2021

## Building Brussels

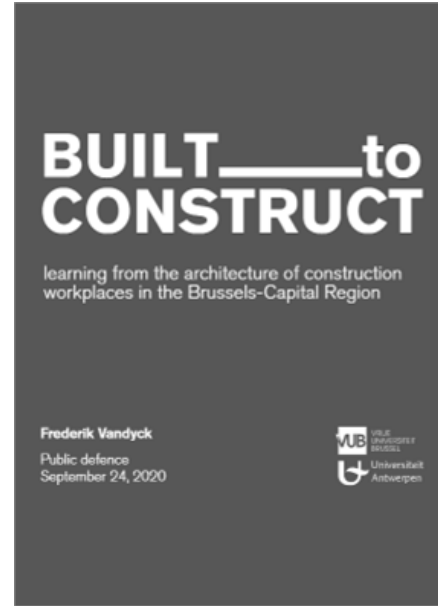
### Brussels city builders and the production of space, 1794-2015



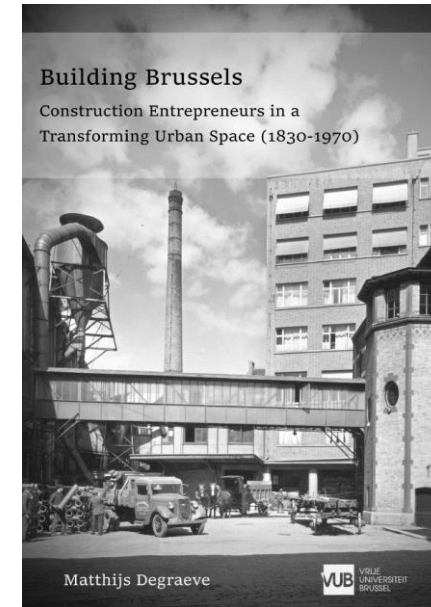
VRIJE  
UNIVERSITEIT  
BRUSSEL



Urban  
Planner  
Sarah  
De Boeck



Architectural  
Engineer  
Frederik  
Vandyck



Historian  
Matthijs  
Degraeve





**VUB Interdisciplinary research project 2021-2026**



**Re-building Brussels (1695-2025)  
The construction sector as an engine  
for social inclusion and circularity**

# Re-building Brussels (1695-2025) The **construction sector** as an engine for **social inclusion and circularity**

## VUB

- **Circularity** ARCH Department of Architectural Engineering  
Ine Wouters, Stephanie Van de Voorde, Niels De Temmerman
- **Inclusive labour market** HOST Historical Research into Urban Transformation Processes  
Heidi Deneweth, Wouter Ryckbosch
- **Foundational economy** COSMOPOLIS Centre for Urban Research  
David Bassens, Michael Ryckewaert



# **Re-building Brussels (1695-2025)**

## **The construction sector as an engine for social inclusion and circularity**

- Which construction materials were salvaged and reused during the past 300 years?
- How has the labour market evolved from the beginning of modern urban growth in the 18th century until today?
- Can circular economy and the labour market act as an engine for social inclusion and reduce inequality?
- ...

# Re-building Brussels (1695-2025) The construction sector as an engine for social inclusion and circularity



Architectural Engineer  
Louise Huba



Architectural Engineer  
Lara Reyniers



Historian  
Karoline da Silva Rodrigues



New vacancy